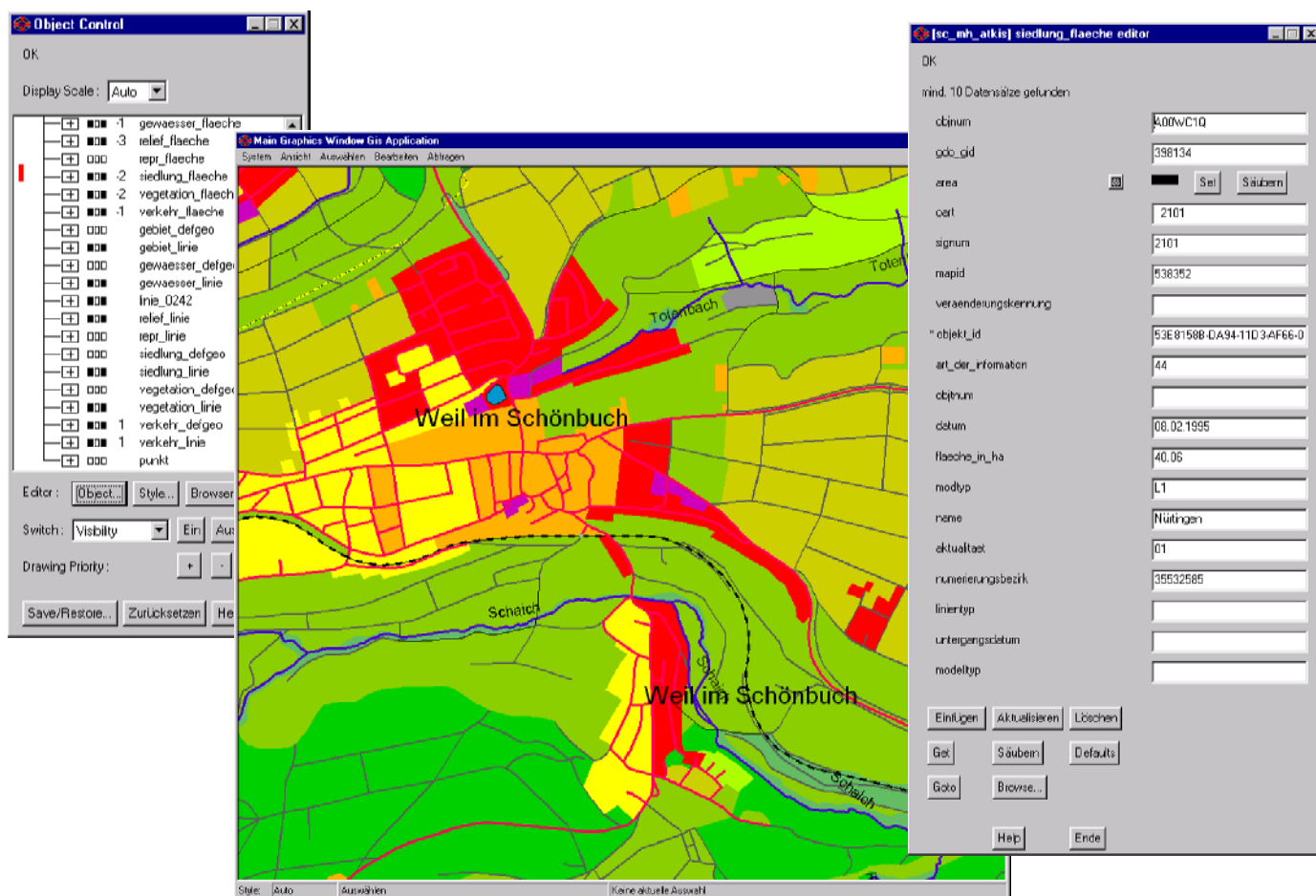




CISwitch

CITRA[®]-Smallworld-data model generator for easy and quick integration of data into Smallworld



General information

With CISwitch data from nearly any source format can be imported into Smallworld very easily and very fast and at low cost.

CISwitch is based on the CITRA technology, which is ideal for a tailor made data conversion of geodata within the context of Smallworld.

Data import into a predefined data model often involves considerable effort in data modelling or the configuration of translators. Poor quality of the source data or insufficient data preparation can entail the rejection of an unacceptably large number of objects by the target data base in spite of the effort taken and the money spent.

Various mechanisms available in the applications of Smallworld guarantee a superb quality of the stored data.

While the maintenance of one's own data demands such a high data quality, the economical profitability is lacking whenever the foreign data are merely used as qualified background information or on a temporary basis within the framework of regional planning (new housing areas), since the cost of the data preparation is high. Therefore, the integration of such data - though desirable - is often omitted for economic reasons and the usefulness of the GIS applied remains suboptimal.

Basic information on CITRA®

CITRA is a neutral data format and, at the same time, serves as a program system for the analysis and exchange of geodatasets between different geoinformation systems. CITRA can transport data between more than 40 source- and target systems and data formats and will model the data as required (e.g. Smallworld, GeoMedia, Sicad SQD/SQS, DGN, MapInfo, ArcView, DXF, IBM GFIS, Oracle Spatial).

Data transfer and functional mode

Once the data are transferred from the above mentioned systems into the data format CITRA they can be modelled according to need. Possible modelling processes are: the generation of polygon objects, filtering, preparation of attribute data, just to mention a few.

CISwitch analyses the (possibly modelled) CITRA data and will automatically generate a Smallworld data model as CASE-archive and the control tables for the CITRA-Smallworld-translator. Alternatively CISwitch is able to generate Oracle Spatial data bases, which can be processed in Smallworld version 3.1 (0) and upward.

Once the data model has been instituted in Smallworld via the CASE-tool in the usual way, the CITRA-file can be easily loaded into the data base with the translator CITRA → Smallworld.

CISwitch - areas of application

Whenever the dataset does not require the entire functionality of the corresponding application, but merely background information combined with factual data, the CITRA-Smallworld data model generator CISwitch can offer an interesting alternative to the complex data preparation for a predefined target data model. The following applications are possible:

Quality control of source data in Smallworld. Transfer of data of varying suppliers into Smallworld without complex and tedious configuration effort.

Transfer of foreign data without a corresponding application.

The generated data model can serve as a temporary model during the migration into a particular application.

CISwitch guarantees a complete transfer of the data and thus the accessibility during a migration. Even unsystematically wrong source data, whose transfer into application objects would be too complex and expensive, can be transferred into Smallworld as "error objects" using CISwitch, with the possibility of later post-processing.

Foreign data can be quickly and efficiently loaded from any system as a qualified background, together

with all attribute data. The objects are processed with the help of the usual editors known from the applications.

Data will be available in Smallworld instantly and completely, and are ready for information purposes or further processing in Smallworld.



Further advantages

The source data model can be transferred to Smallworld in a manner true to the original. If the data quality in the source system is not sufficient for the purposes concerned, the data can be upgraded in the neutral format CITRA. The Smallworld data model is scalable at liberty, since CITRA will model the source data to match the requirements in Smallworld exactly.

The import times are short, and, as concerns the target data bases Oracle Spatial, make up only a fraction of the usual import times.

Oracle Spatial data bases are also accessible from various other GIS within a company and are means of company-wide data integration.

CISwitch offers utmost flexibility along with a tailor-made, efficient and economical data transfer, through minimal configuration effort for the interface.

CISS TDI Ltd is partner of
GE Energy Germany Ltd.



The ATKIS data displayed were kindly put at our disposal for presentation purposes by the Dept. of Topographical Survey Baden Württemberg. Basis: DLM 25 Baden Württemberg, Az.: 2851.2-D/1108. The second figure is part of the sample map (EDBS/ALK) from North Rhine-Westphalia.

The used brand names and software designations are registered trade marks of the companies mentioned.

Further informations: www.ciss.de or eMail: ciss@ciss.de.